

SKENA



2D ASYMMETRIC
LUMBAR SUPPORT

2 BASES AND 4
WHEEL MODELS

MADE IN THE
EUROPEAN UNION

EN
1335-1:2021
1335-2:2019

Skena is an ergonomic task chair with a mesh backrest and lumbar support that are independently adjustable, allowing asymmetrical adjustment to suit the user. Its ergonomic shape and pronounced curve suggest its comfort and ergonomics at first glance.



Designed by EMMANUEL ZONTA

He studied design in Venice and graduated from the Polytechnic School of Milan. During his studies in Milan he worked in the studio of Giulio Iachetti, with whom he continues to collaborate. In 2013 he moved to London to work with Morph Studio. Back in Italy, he took part in a project on future mobility organized by BMW and Napapijri. In 2015 he starts working for Diesel Jeans at Diesel Living.

Since 2017, he has opened his own studio, exploring different fields and projects, from art to interior and industrial design, mixing different working methods to achieve unique design and multidisciplinary results.

3 page
Swivel chair



5 page Dimensions

6 page Sustainable Skena

7 page Ergonomics

8 page Finishes

9 page Instructions for use / Arms

13 page Instructions for use / Mechanism

16 page Assembly instructions

18 page Certificates, maintenance, cleaning and warranty

01.

Backrest

Backrest structure made of black, white or sand polyamide (PA6) plastic injection moulding, reinforced with 30% fibre. Backrest made of high-strength technical mesh.



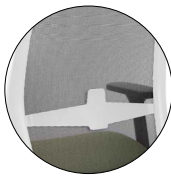
With asymmetrical 2D lumbar support, adjustable in height and depth:



This type of lumbar support is currently the most ergonomic solution, offering the greatest possible adjustment.



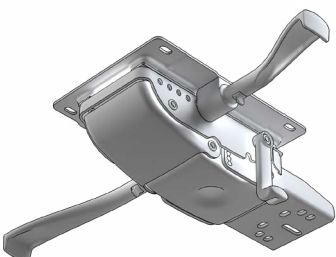
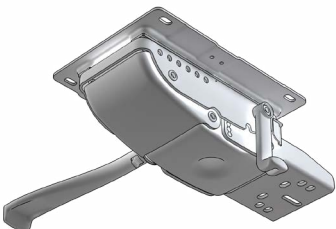
Optional: Adjustable in height lumbar support, black or white.



02.

Seat

Seat exterior in black or white injected polypropylene plastic, 100% recyclable. Optional fireproof treatment (UNE 23727/90 / UNE 23721/90 / UNE 23724). Beech plywood interior (MQ cert. 07-175), covered with 63 kg/m³ high density expanded polyurethane fireproof foam (EN ISO 845). The foam is injected with our Air Soft system, which allows a softer foam while maintaining density.



03.

Self-weighting synchro-displacement mechanism / synchro (EN 1335-2:2018)

The synchro mechanism allows the seat and backrest to tilt synchronously with the central axis of the chair, but independently for models that are not monocoque. Thus, it is possible to adjust the degree of inclination of the backrest and seat.

The sliding system also has 6 different positions to adapt the depth of the sitting position and a translation of 7 cm.

Characteristics of this system are the following:

- Self-weighting mechanism with 3 settings.
- Backrest tilt up to 16° with 5 positions, 4 locked and 1 free.
- Up to 5.5° of seat inclination, which is the working position 0°.
- Self-weighting function from 50 to 120 kg.



04.

Gas column, bases and wheels

- Elevation using a class 4 black gas lift, tested for users weighing up to 150 kg.
- Flat base in polished aluminum or white epoxy painted aluminum (RAL 9010), 72 cm diameter, or black nylon, 68 cm diameter.
- Conical base in polished aluminum, white epoxy painted aluminum (RAL 9010) or black nylon, 68 cm diameter.
- Double Desmopan rubber wheels 65 mm diameter with chrome finish or black nylon.
- Double wheels of 65 mm diameter with soft ABS plastic band, hollow design.
- Double Emilsider wheels of 65 mm diameter, with soft rubber-reinforced copolymer tyre tread and hollow design, and reinforced copolymer structure, tested for 24 hours use (EN 12529 / BIFMA X 5.1). Central black structure and grey tyre tread.

With an adjustable safety braking system (EN 12529) that applies a slight brake when the user stands up from the seat in order to prevent any movement of the chair when not in use. It has a screw at the bottom to adjust the braking force or deactivation of the braking system.

- The base connection bolt has a circular nylon ring to prevent noise when used on metal or aluminum bases.

- Optional: Anti-slip gliders in black nylon.



01.

Mesh

Highly resistant technical mesh backrest whose characteristics are:

Thickness: 1.15 mm.

Weight of the fabric (UNI 9213/3): 560 gr/m²

Density of warp threads (UNI 1049/2): 6.1 threads/cm.

Density of weft threads (UNI 1049/2): 5.3 threads/cm.

Warp breaking load (UNI EN ISO 1421): 310 kg/cm.

Weft breaking load (UNI EN ISO 1421): 270 kg/cm.

Elongation at break in warp (UNI EN ISO 1421): 21%.

Elongation at break in weft (UNI EN ISO 1421): 15%.

Fatigue resistance: EN 1728/00 / EN 15373/07

Light resistance: EN ISO 4892-2/06.

Color resistance to rubbing: EN ISO 105-x12/03.

Abrasion resistance: EN ISO 12947-2/98.

Composition:

70% PVC

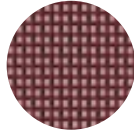
30% Polyester



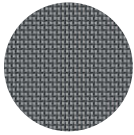
01 / White



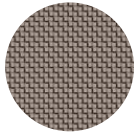
02 / Black



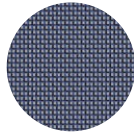
18 / Red



22 / Grey



26 / Brown



27 / Blue

02.

Armrests (optional)



- BR02/BR23: Height adjustable, black or white polypropylene injection molded. Black polyurethane injection molded armrests.

1. Height adjustment 11 cm, with 10 locking positions.



BR26: 2D, in injected black polypropylene.

Polyamide armrests.

1. Height adjustable by 8 cm, with 9 locking positions.

2. Width adjustment between the armrests, up to 3 cm in each direction.



-BR03: 3D, black polypropylene injection. Armrests in black polyurethane injection.

1. Height adjustment 11 cm, with 10 locking positions.

2. Multi-position adjustment of the armrest It can be slid 19 cm forward and backward, and 6 cm to the side, and can adopt any position between these measurements.



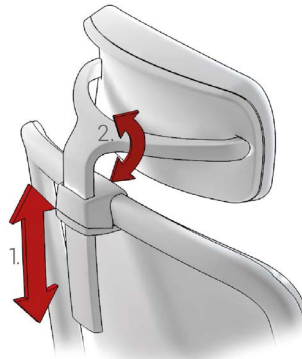
-BR04: 4D, black polypropylene injection. Polyurethane armrests.

1. Height adjustment 7 cm, with 6 locking positions.

2. Armrest depth adjustment, 3 cm in each direction.

3. Rotation of the armrest, 30° maximum in each direction.

4. width adjustment between the armrests, up to 3 cm in each direction.



03.

Headrest (Optional)

Headrest structure made of black or white polyamide (PA6) plastic injection moulding, reinforced with 15% fibre.

Headrests in fireproof foam (UNE EN 1021-2/06 / BS-5852/06) made of 60 kg/m³ high density expanded polyurethane (EN ISO 845).

1. Height adjustment.

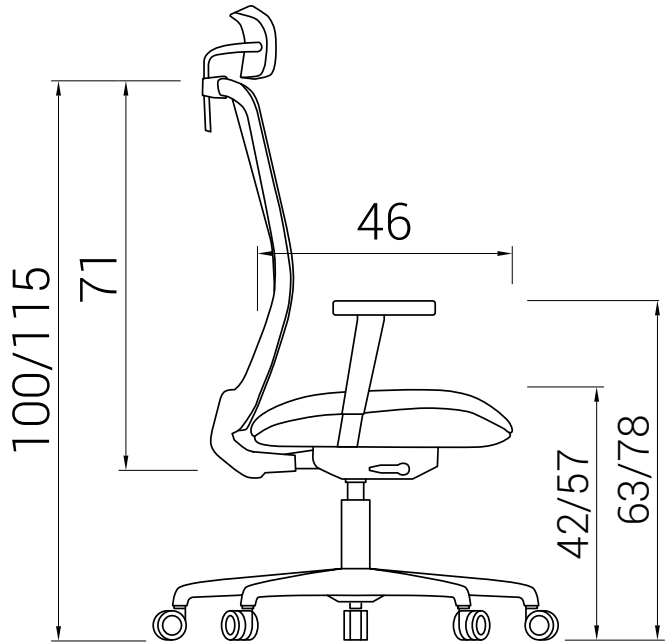
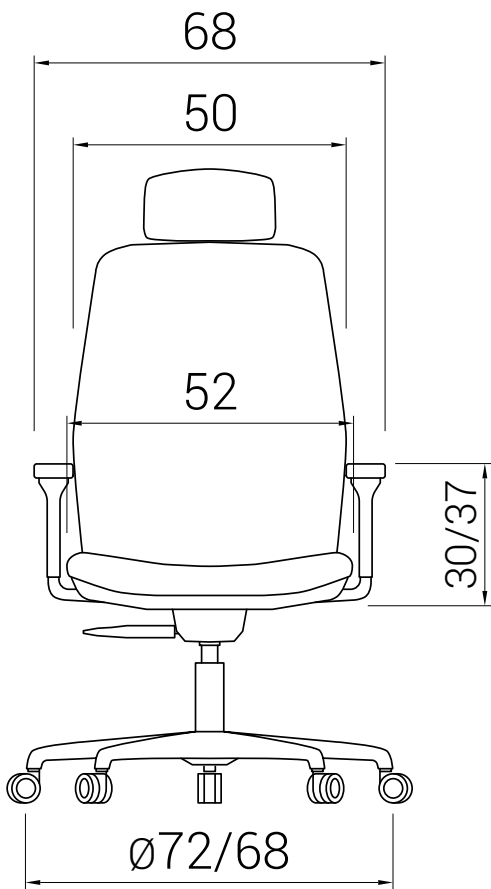
2. Inclination adjustment.

04.

Coat rack (optional)

Made of black or white polyamide (PA6) plastic injection moulding, reinforced with 15% fibre.





SKENA SUSTAINABLE



96%
RECYCLABLE

48% Metal
21% Polypropylene
15% Other plastic materials
5% Wood
11% Others



BACKREST
Black, white or sand polyamide plastic injection.
High resistance technical mesh.

SEAT
Polypropylene exterior.
Beech plywood interior covered with polyurethane foam.

MECHANISM
in steel.

BASE
in black nylon, polished aluminium or white painted aluminium.

WHEELS
double rubber of Desmopan.

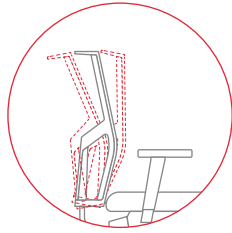
- ✓ 100% recyclable cardboard packaging, made from 90% recycled materials.
- ✓ Dileoffice is certified according to ISO 9001:2015, 14001:2015 and 14006:2020. All phases of the production process, from the receipt of components to the delivery of the finished product, are meticulously managed to minimise the impact on the environment.
- ✓ Dileoffice chairs are assessed by AIDIMEE to certify the compliance of each product with UNE EN standards.
- ✓ If it is necessary to replace the entire chair or any of its parts, the end customer will be informed of the recycling management of each element according to the composition of the materials.
- ✓ Transport is carried out by scheduled routes, giving priority to fuel savings. We use our own transport trucks, always trying to use the maximum volume, and minimising the volume in the packaging.
- ✓ The recyclability percentage is obtained from an average of the elements that compose the analyzed family.

Last update: December 2024

DILE ERGONOMICS



GOOD POSTURE IS ESSENTIAL TO AVOID HEALTH PROBLEMS



01. THE INCLINATION OF THE SEAT AND THE BACKREST

A synchronized movement of the seat and backrest, configure a very successful solution for long working or study days.

02. LUMBAR ADJUSTMENT

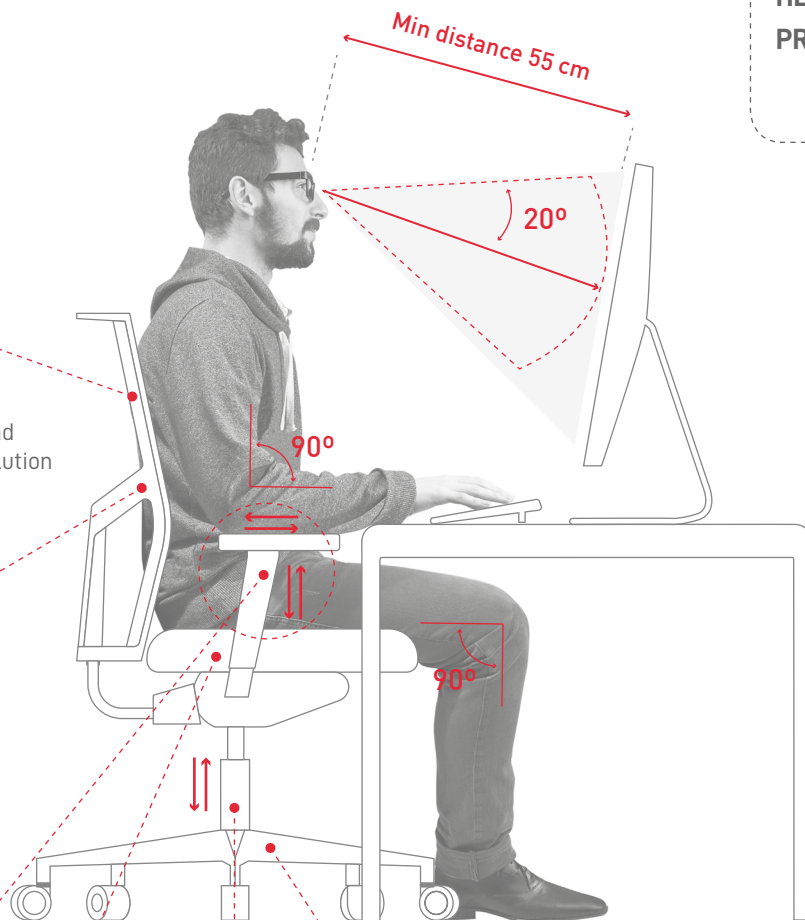
The backrest must provide good support for the entire back and be adapted to the lumbar part. The lumbar adjustment mechanism allows the curvature of the chair to be adjusted according to the curvature of the user's back for better support.

03. ADJUSTABLE ARMRESTS

The forearms should be parallel to the work surface and form a right angle with the arm.

04. THE STRENGTH OF THE SEAT

The seat must offer firmness and adaptation to the user's physiognomy.



05. CHAIR HEIGHT ADJUSTMENT

The possibility of adjusting the height allows for the correct posture, with the feet comfortably resting on the floor and the legs in a horizontal position.

07. FABRIC

Depending on the area of use and climate, one fabric or another should be chosen.

06. BASES

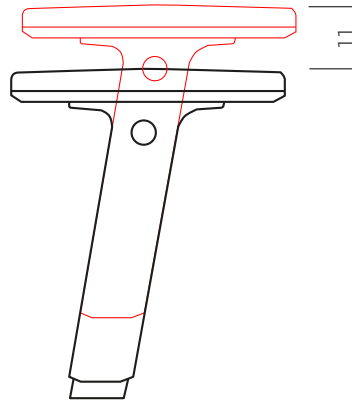
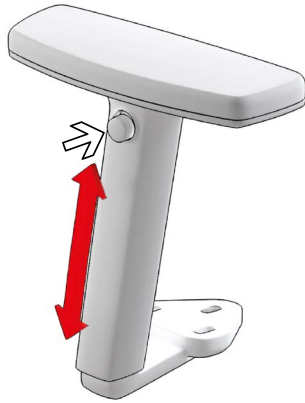
The base of the chair should have 5 points of support for the wheels on the ground, to facilitate their movement with minimal effort.

“Don't forget to take a break to stretch and move around regularly”

01 BASIC (Go1)											
02 URUGUAY (Go1)											
03 VISUAL (Go2)											
04 CRYSTAL (Go2)											
05 RELIFE (Go2)											
06 ONE (Go2)											
07 BABEL (Go2)											
08 TONAL (Go3)											
09 JUST (Go3)											
10 FELICITY (Go3)											
11 VALENCIA (Go3)											
12 ERA (Go4)											
13 RIVET (Go4)											
14 FLORIDA LEATHER (Go4)											

1. Arms

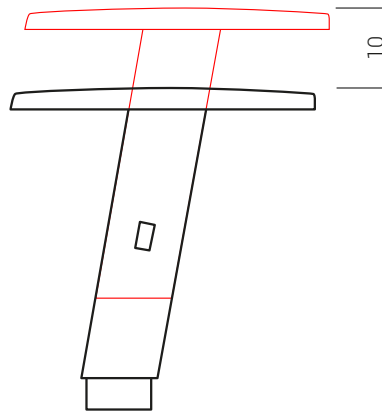
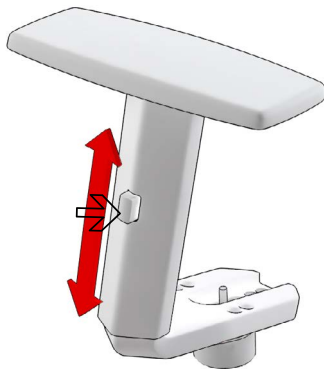
BR02/BR23



HEIGHT ADJUSTMENT

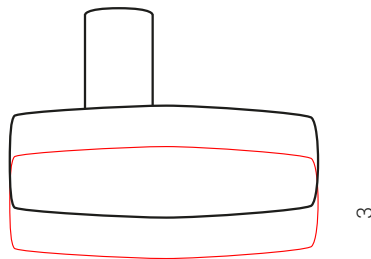
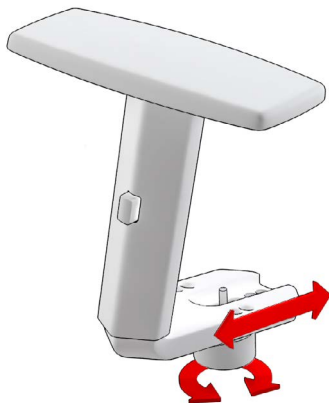
Press the button on the armrest (arrow) and without releasing it, adjust the height of the armrest. Once in the desired position, release the button.

BR26



HEIGHT ADJUSTMENT

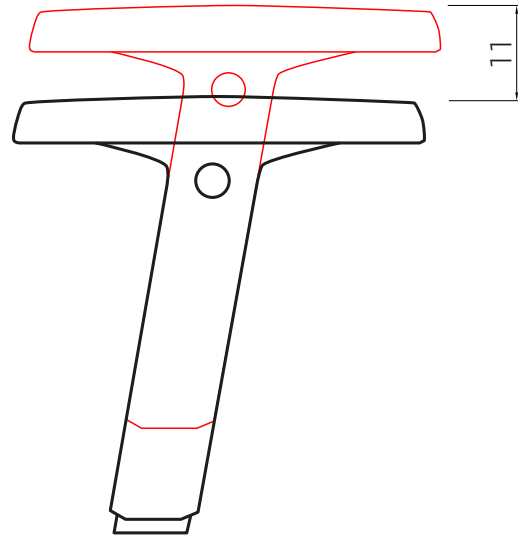
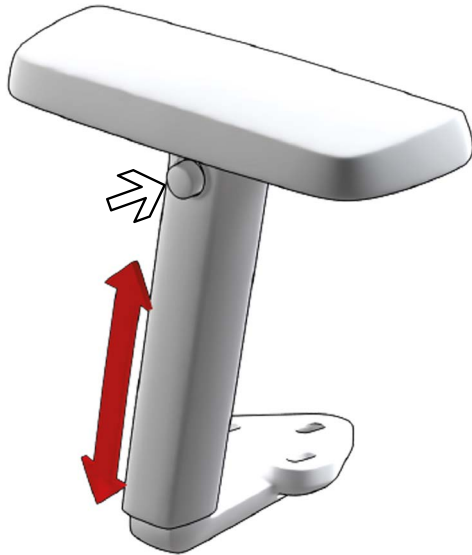
Press the button on the armrest (arrow) and without releasing it, adjust the height of the armrest. Once in the desired position, release the button.



ARMREST WIDTH ADJUSTMENT

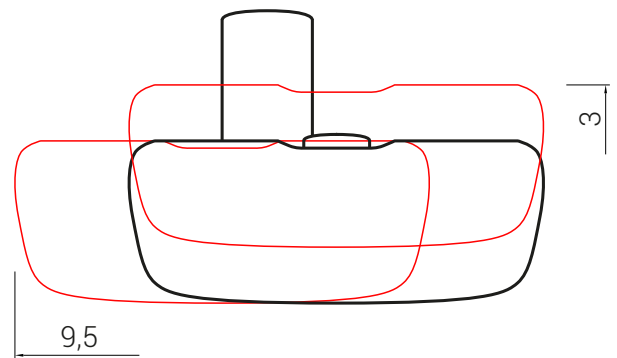
Loosen the screw on the armrest. Move the armrest to the desired position. Tighten the lower screw.

BR03



ADJUSTING THE HEIGHT

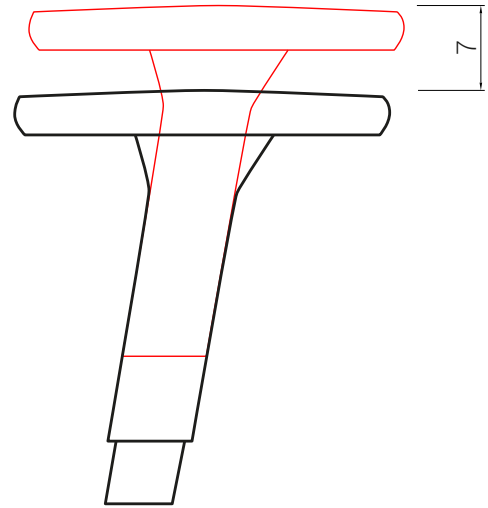
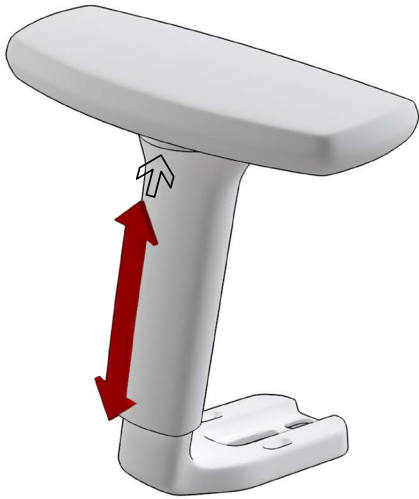
Press the button on the armrest (arrow) and without releasing it, adjust the height of the armrest. Once in the desired position, release the button.



MULTI-POSITION ADJUSTMENT

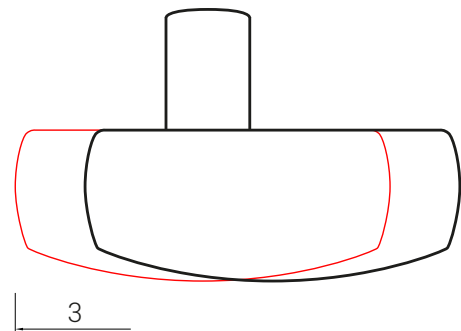
Press the armrest button (arrow) and, without releasing it, adjust the position of the armrest both lengthwise and widthwise. Once in the desired position, release the button. It moves in each direction by 9.5 cm lengthwise and 3 cm widthwise.

BR04



HEIGHT ADJUSTMENT

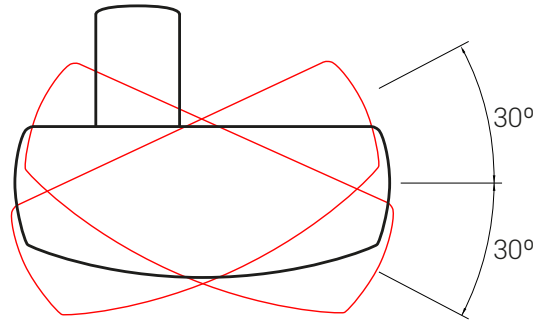
Press the button on the armrest (arrow) and without releasing it, adjust the height of the armrest. Once in the desired position, release the button.



ADJUSTING THE DEPTH OF THE ARMREST

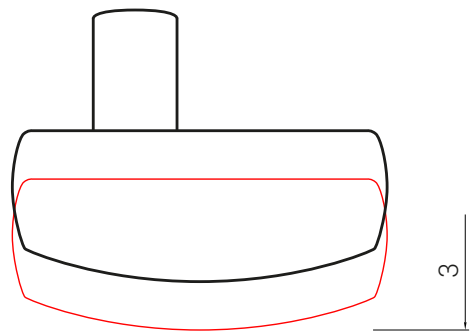
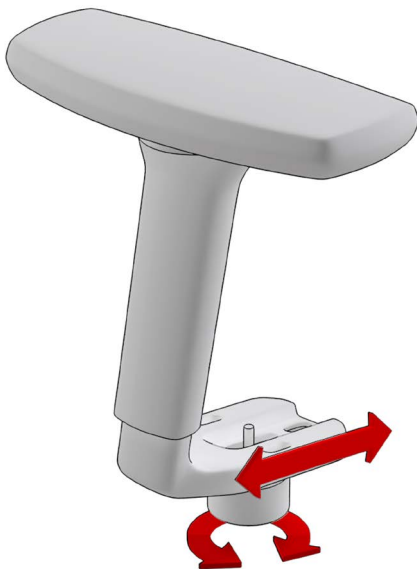
By pressing firmly on the armrest, the armrest is pushed forward or backward to the desired position. It moves 3 cm in each direction.

BR04



ARMREST ROTATION

By pressing firmly on the armrest, a force is produced by turning the armrest inward or outward until it is in the desired position.

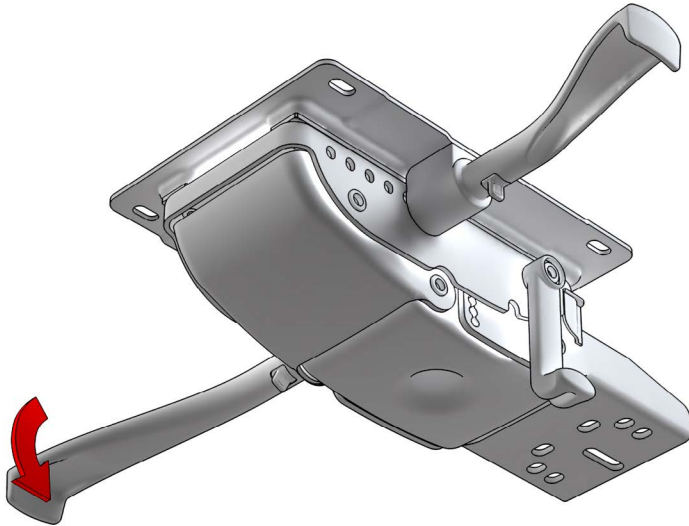


ARMREST WIDTH ADJUSTMENT

Loosen the screw on the armrest. Move the armrest to the desired position. Tighten the lower screw.

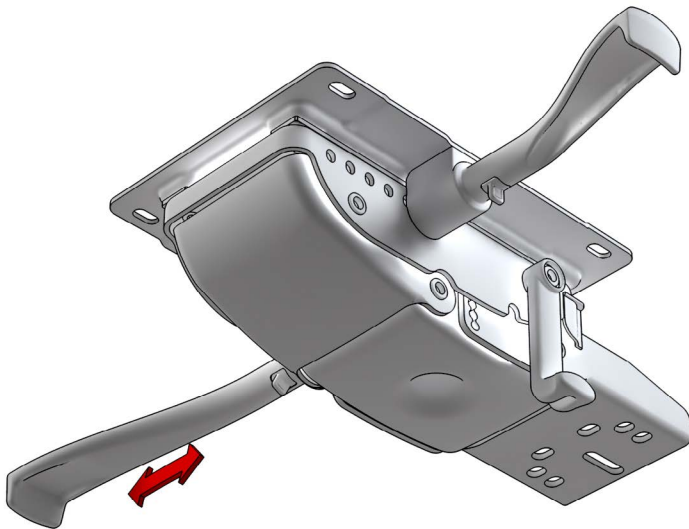
2. Mechanism

SYNCHRO-SLIDE MECHANISM



GAS LIFT

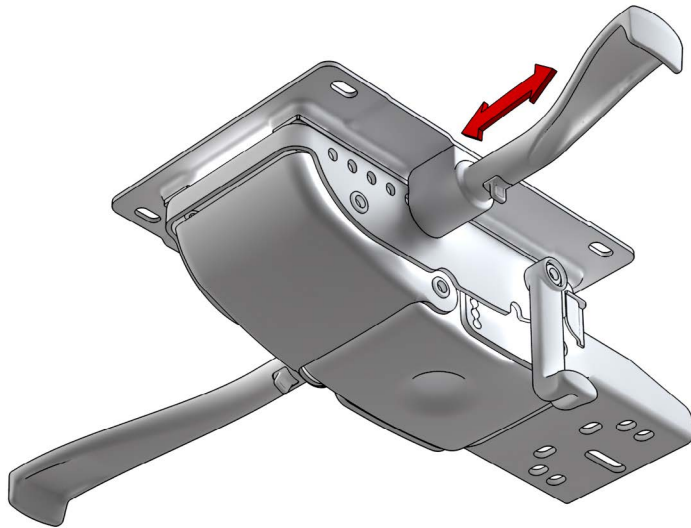
By lifting the handle we unlock the gas column. Without weight the chair lifts up. With the user seated, the chair goes down. Once the handle is released, the gas column is blocked again.



ADJUSTMENT FOR SEAT/BACKREST INCLINATION (SYNCHRO)

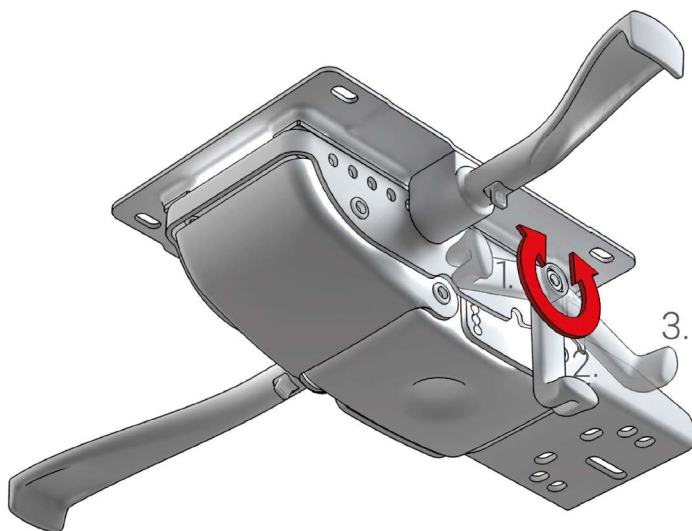
Pulling the handle out releases the synchronization device, which allows the seat and back angle to be changed synchronously while the user is seated. Returning the handle to its original position locks the seat and back in the desired position.

SYNCHRO-SLIDE MECHANISM



ADJUSTING THE SLIDING OF THE SEAT (SLIDING SYSTEM)

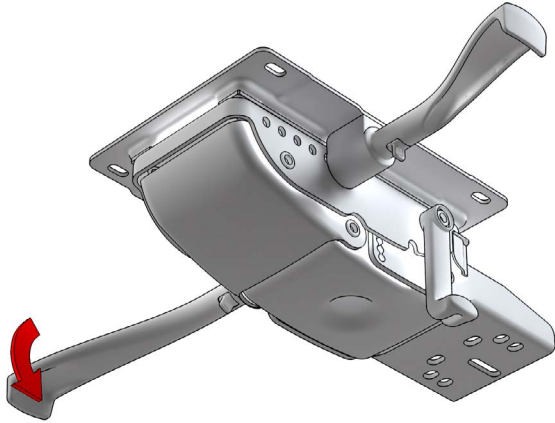
By pulling the handle out, the seat slide is released and can be moved forward or backward. When the desired position is reached, release the handle and the seat is locked.



SELF-WEIGHTING FUNCTION

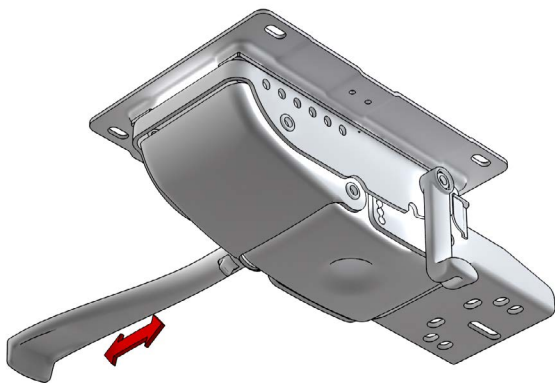
With the lever in position 1, the weight of the mechanism can be adjusted for users up to 120 kg. In position 2, approximately 90 kg. In position 3, 50 kg.

SYNCHRO MECHANISM



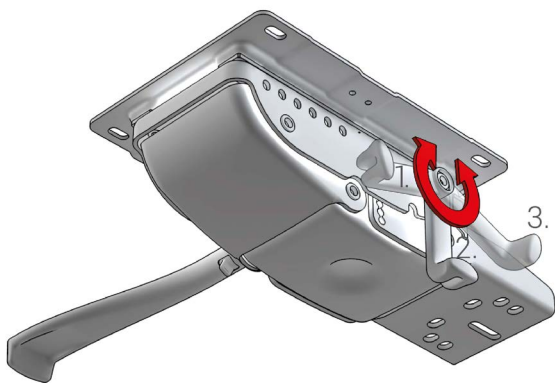
GAS LIFT

By lifting the handle we unlock the gas column. Without weight the chair lifts up. With the user seated, the chair goes down. Once the handle is released, the gas column is blocked again.



ADJUSTMENT FOR SEAT/BACKREST INCLINATION (SYNCHRO)

Pulling the handle out releases the synchronization device, which allows the seat and back angle to be changed synchronously while the user is seated. Returning the handle to its original position locks the seat and back in the desired position.

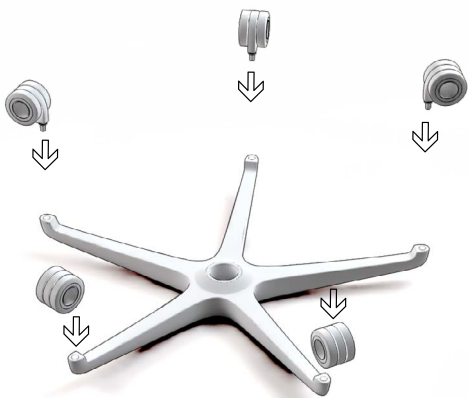


SELF-WEIGHTING FUNCTION

With the lever in position 1, the weight of the mechanism can be adjusted for users up to 120 kg. In position 2, approximately 90 kg. In position 3, 50 kg.



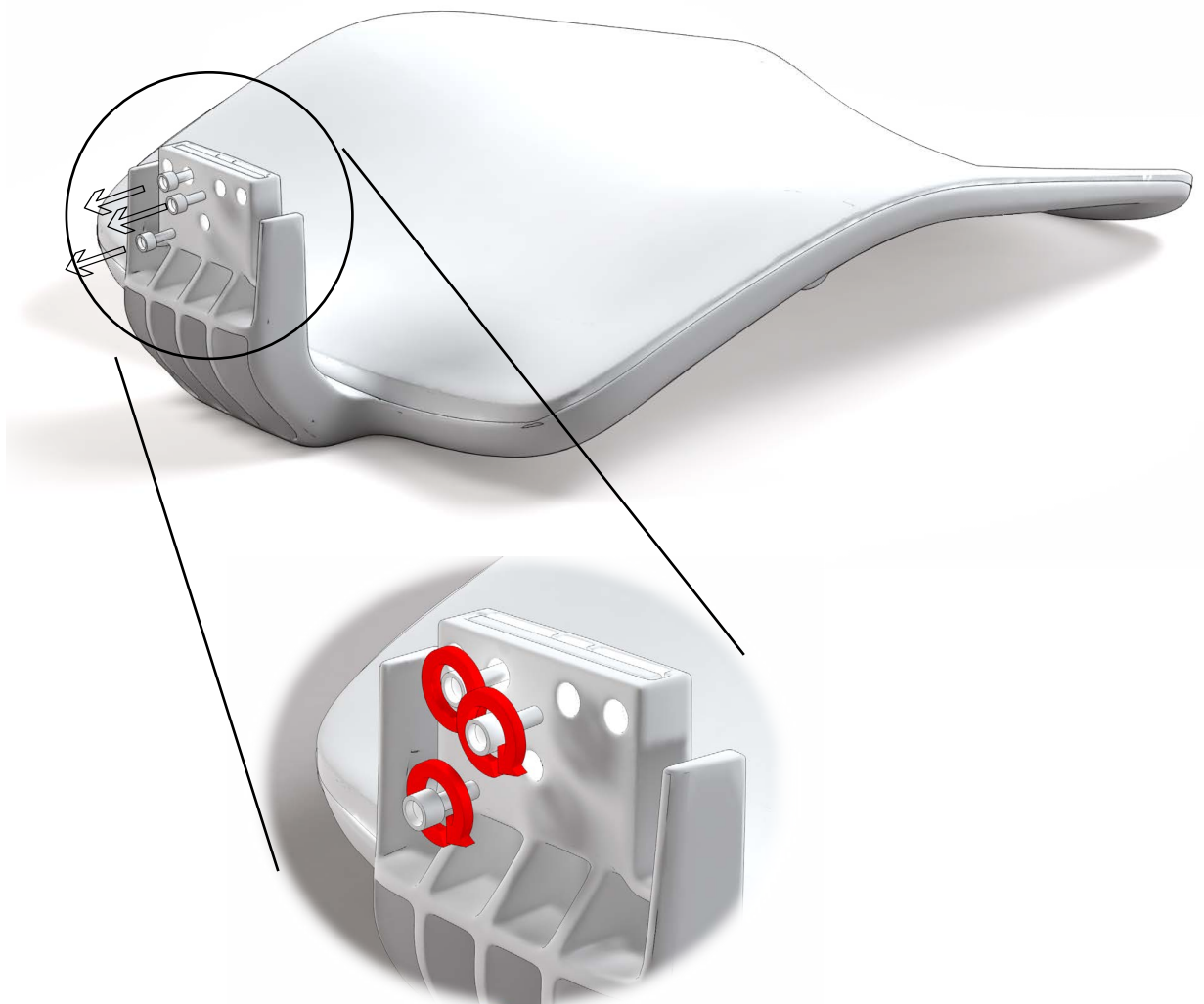
1.



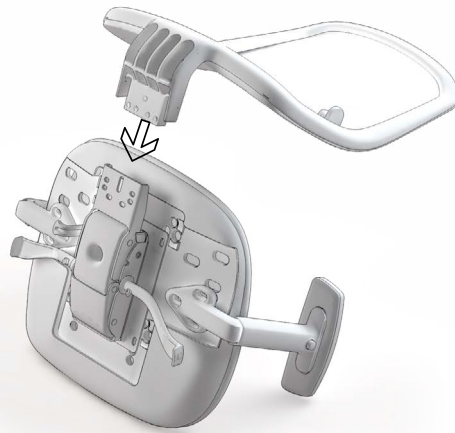
2.



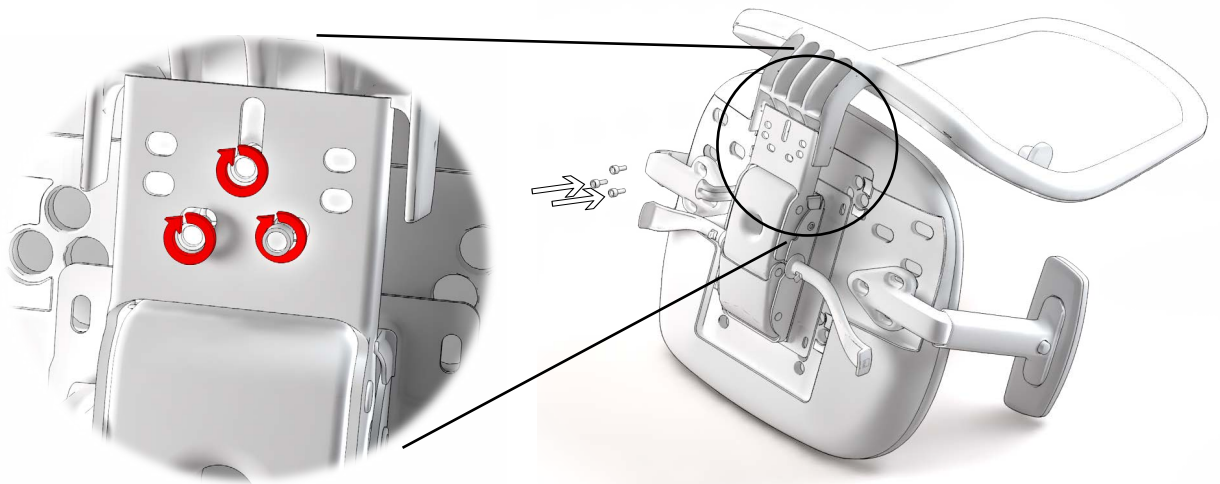
3.



4.



5.



6.



CERTIFICATES

DILE has ISO 9001 quality certificates, which establish the requirements that a company must fulfil in order to implement an adequate quality management system in its production system, ISO 14001, which implies a commitment to and sustainable management with the environment, and ISO 14006, which is a certifiable guarantee that an organisation identifies, controls and minimises the environmental impact of its products and/or services in all phases of its life cycle, including the project and design phase.

Aidimme is the Technological Institute for the processing of metals, furniture, wood, packaging and related products. It is Aidimme that tests our chairs and issues certificates accrediting their ergonomics, durability and resistance.

Skena has the UNE EN 1335-1:2021 and UNE EN 1335-2:2019 certificate.

FAMO is the Association of Manufacturers of Furniture and General Equipment for Offices and Communities. Since 1986, it has represented and defended the interests of companies in the office and community furniture sector, promoting their image and presence in international markets. DILE has been a member of the FAMO since 2008.



Empresa asociada
AIDIMME
Instituto Tecnológico



MAINTENANCE AND CLEANING

01. FABRIC

Articles upholstered with these fabrics (BASIC, VISUAL, CRYSTAL, RELIFE, ONE, BABEL, TONAL, JUST, FELICITY, ERA AND RIVET):

- Frequent vacuuming or dry cleaning.
- Normal cleaning with a cloth slightly humidified with warm water and if the stain requires it, add a little neutral soap (ph 5.5), rinse and leave to dry in open air (avoid the sun).
- Do not use bleaching agents, abrasive products, cleaning waxes or ordinary domestic cleaning sprays.

Articles upholstered in touch leather or synthetic material. (URUGUAY AND VALENCIA):

- Normal cleaning with a microfibre cloth, slightly humidified with warm water and then dry with a dry cloth.
- Stains should be treated as soon as possible to prevent them from penetrating.
- For aggressive stains, such as pen marks, use a cloth humidified in a solution of water and diluted alcohol.
- Do not use abrasive products, cleaning waxes or cleaning sprays that are normally used in daily domestic use.
- Do not apply bitumen or chemicals.
- Never apply dry foam or scrape and/or scrub vigorously.
- Avoid exposure to heat sources.

Articles upholstered in leather:

- Clean carefully (without rubbing) with a simple cloth if possible made of microfibre humidified with water.
- If the stain is more important, add a little neutral soap (ph 5.5), rinse and leave to dry in the open air.
- For aggressive stains, such as pen marks, use a cloth humidified in a solution of water and diluted alcohol.
- Do not use abrasive products, cleaning waxes or cleaning sprays that are normally used in daily domestic use.
- Do not apply bitumen or chemicals.
- Never apply dry foam or scrape and/or scrub vigorously.
- Avoid exposure to heat sources.

02. PLASTIC AND WOODEN PARTS

- Normal cleaning with a cloth slightly humidified with warm water and a little neutral soap (ph 5.5), rinse and dry with a dry cloth.

03. METAL PARTS

- Normal cleaning with a cloth slightly humidified with warm water and a little neutral soap (ph 5.5), rinse and dry with a dry cloth.
- Polished aluminium parts can be polished with a dry cotton cloth to restore their original shine.

04. END OF LIFE PACKAGINGS



All packaging materials used can be disposed of without danger to the environment. The cardboard box can be broken or cut into smaller pieces, and the packing bag is made of polyethylene. All these packaging materials can be taken to a waste collection center or deposited at a recycling station. Dispose of transport packaging in the most environmentally friendly way possible. Returning packaging materials to the material cycle saves raw materials and reduces waste production.

PRODUCT

All Dileoffice products have a high degree of recyclability at the end of their life. After separation of their components, the majority of them can be dismantled, this facilitates the separation of the different materials. It is recommended to deliver them to a recycling center for proper separation and processing, thus contributing to the environment.

WARRANTY

The guarantee period is 5 years from the invoice date, during which time DILE undertakes to replace defective or broken parts. DILE will not be responsible for

the improper use of our products and no guarantee will be given for deterioration due to incorrect use and/or for the use of products that are not recommended for

maintenance. It is possible to extend the guarantee for specific projects/products by contacting the sales department.