

WAXMAN

COLOR SWATCH BOOK

grado

Solo

A

Composition 100% Polyester
Origin China
Abrasion >40000
Lightfastness 4
Rubbing 3-4
Pilling 4

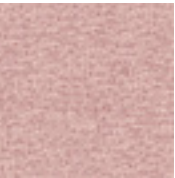
Description
This Chenille fabric has a strong layered, three-dimensional texture that feels soft and thick. The colors are vibrant and saturated, making it perfect for modern-style spaces.



Solo-102
Ivory



Solo-170
Champagne



Solo-180
Dusty Pink



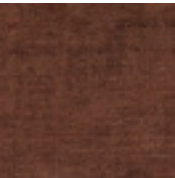
Solo-270
Mustard Yelloween



Solo-355
Dark Green



Solo-460
Classic Black



Solo-500
Burnt Sienna

City

A

Composition 100% Polyester
Origin China
Abrasion >25000
Lightfastness 4
Rubbing 3-5
Pilling 4-5

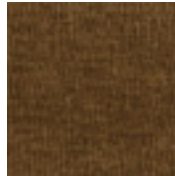
Description
The City fabric features a unique pleated texture, offering a thick and soft feel that's perfect for modern-style spaces.



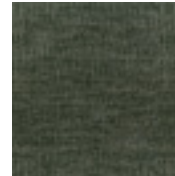
City-120
Beige



City-262
Mustard Yellow



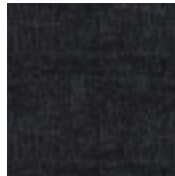
City-270
Caramel



City-355
Fern Green



City-431
Dark Brown



City-460
Classic Black

Canna

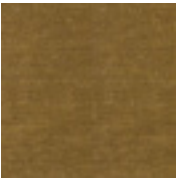
A

Composition 100% Polyester
Origin China
Abrasion >25000
Lightfastness 4
Rubbing 3-4
Pilling 4

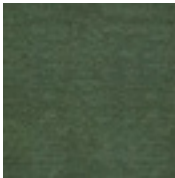
Description
The Canna fabric is a chenille fabric with a unique ripple texture. It is layered and feels thick and soft. When caring for the fabric, be mindful of the direction of the pile to prevent it from losing its elasticity and upright stance.



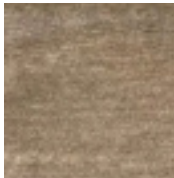
Canna-100
Pearl White



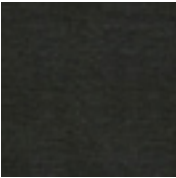
Canna-273
Yellow Brown



Canna-352
Forest Green



Canna-440
Chocolate



Canna-460
Carbon Black

Mohair

A

Composition 100% Polyester
Origin China
Abrasion >40000
Lightfastness 4
Rubbing 3-4
Pilling 4

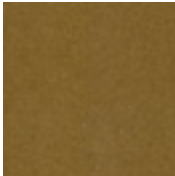
Description
Mohair utilizes custom high-count and high-density yarn to produce a luxurious plush texture, displaying a soft luster and imparting a high-end, matte feel to the fabric. The fabric is complemented by a delicate, soft two-color woolen pattern, creating a distinctive and full appearance that provides a warm touch to the user.When caring for the fabric, be mindful of the direction of the pile to prevent it from losing its elasticity and upright stance.



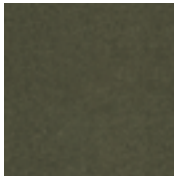
Mohair-103
Soft White



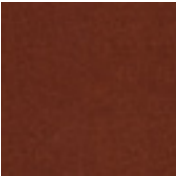
Mohair-110
Off White



Mohair-273
Mustard Yellow



Mohair-353
Dark Green



Mohair-500
Brick Red

Wandy

A

Composition100% Polyester
OriginChina
Abrasion>25000
Lightfastness4
Rubbing3-4
Pilling4

Description
The exaggerated and deep-textured chenille yarn and fancy yarn are interwoven on the woven fabric, creating Wandy's unique rugged style. Despite its strong texture, the thick chenille yarn gives the fabric a full and substantial feel.
The color of this fabric collection is full and pure, suitable for modern-style home space.



Wandy-102

Coconut White



Wandy-170

Light Brown



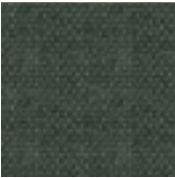
Wandy-181

Sakura Pink



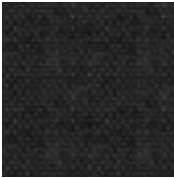
Wandy-260

Mustard Yellow



Wandy-355

Forest Green



Wandy-460

Classic Black

Opera

A

Composition100% Polyester
OriginChina
Abrasion>25000
Lightfastness4
Rubbing3-4
Pilling4

Description
The fabric is inspired by imprints left by the wind over sand dunes and the waves departing from the beach. The chenille yarn brings a three-dimensional visual effect and a strong texture that can be felt by hand. The clear warp and weft weaving of the fabric makes the furniture more stylish and unique.



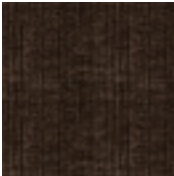
Opera-103

Off White



Opera-273

Yellow Brown



Opera-442

Coffee Brown

King

A

Composition92% Polyester
5% Cotton
3% Nylon
OriginChina
Abrasion>40000
Lightfastness4
Rubbing3-4
Pilling3-4

Description
King combines the softness of cotton with the texture of linen, making it both breathable and comfortable. The design of this cotton-linen blend is simple and rustic, free from complicated accessories. suitable for pairing with various home styles.



King-111

Beige Gray



King-276

Yellow Brown



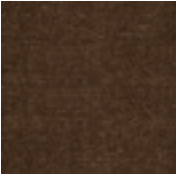
King-354

Wormwood Green



King-500

Pomegranate Red



King-501

Caramel

Lisa Stripe

A

Composition100% Polyester
OriginChina
Abrasion>40000
Lightfastness4
Rubbing3-4
Pilling4

Description
Striped patterns with large loops, interwoven with coarse and fine yarns, creating a rugged and innovative style. The weaving is three-dimensional, detailed, and layered. The yarns, dyed with high-quality, eco-friendly dyes, have a soft sheen and pure, healthy colors



LisaStripe-170

Beige and white stripes



LisaStripe-400

Brown and white stripes

Judy

A

Composition 100% Polyester
Origin China
Abrasion >40000
Lightfastness 4
Rubbing 3-4
Pilling 4

Description
Interwoven with two different colored yarns, it has a crisp, natural washed look, creating a unique, thick texture. It is elegant, soft to the touch, and comfortable.



Judy-120
Oatmeal



Judy-274
Amber



Judy-275
Yellow Brown



Judy-355
Fern Green



Judy-460
Dark Gray

Eyelash

A

Composition 100% Polyester
Origin China
Abrasion >40000
Lightfastness 4
Rubbing 3-4
Pilling 4

Description
The surface of EYELASH is fine and smooth, with a soft and comfortable feel, providing an excellent touch and texture. Due to the mixed color weaving of chenille and loop yarn, its surface exhibits a unique velvet-like texture and luster, forming a exaggerated textural element.



Eyelash-107
Soft White



Eyelash-120
Beige



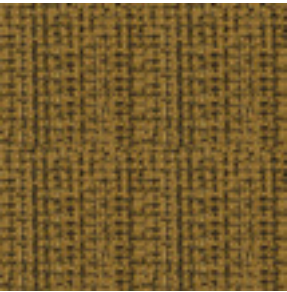
Eyelash-442
Dark Brown

Disco

A

Composition 100% Polyester
Origin China
Abrasion >30000
Lightfastness 4
Rubbing 3-4
Pilling 4

Description
Mixed colors intertwine to form rugged textural elements and a unique style, overall simple and natural. The yarns use high-quality, healthy, and environmentally friendly dyes, resulting in a soft sheen and pure colors. Suitable for pairing with various home decor styles.



Disco-275
Mustard Yellow



Disco-461
Black and gold

Lake

A

Composition 100% Polyester
Origin China
Abrasion >40000
Lightfastness 4
Rubbing 3-4
Pilling 4

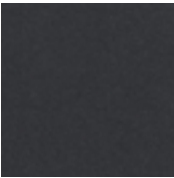
Description
The Lake fabric is soft to the touch, featuring boucle yarn on the surface, providing a layered and uniform texture. The color blending effect is exquisite and delightful to behold.



Lake-110
Beige



Lake-260
Mustard Yellow



Lake-460
Dark Gray

A1986

B

Composition84.5% Polyester,
10.5% Acrylic,
5% Linen
OriginChina
Abrasion25000
Pilling4

Description
The fabric includes natural linen thread,
making it more breathable and friendly to the
skin.



A1986-2A

Beige Gray



A1986-4A

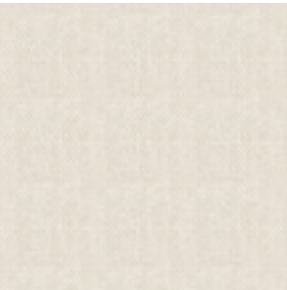
White

Nature

B

Composition100% Polyester
OriginChina
Abrasion>25000
Lightfastness4
Rubbing3-4
Pilling4

Description
Nature is a chenille fabric with a bunchy yarn
texture. It has a strong texture and feels soft
and thick. The blend of two colors creates a
gentle visual effect, enhancing the cozy vibe
of the home.



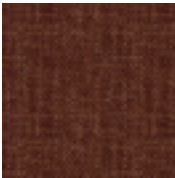
Nature-101

Pearl White



Nature-110

Beige



Nature-500

Brick Red

A2267

B

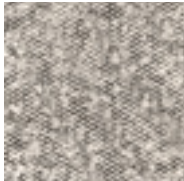
Composition81% Polyester,
19% Acrylic
OriginChina
Abrasion>50000
Pilling4

Description
The fabric has a lamb wool-like texture on the
surface, which is thick and layered.
It can be upgraded to Level C three-proof
fabric.
Three-proof: waterproof, oilproof, and
dustproof.



A2267-2A

Off White



A2267-3A

Panda



LODP-A2267-2A

Off White

Kapok

B

Composition100% Polyester
OriginChina
Abrasion>40000
Lightfastness4
Rubbing3-4
Pilling4

Description
Kapok is a chenille fabric, featuring bold
modern geometric patterns and trendy
colors that give it a unique style, simple yet
fashionable. The soft and comfortable texture
of chenille makes it suitable for various home
styles.



Kapok-111

Beige



Kapok-355

Olive Green

Wales

B

Composition 100% Polyester,
Origin China
Abrasion >40000
Lightfastness 6
Rubbing 4-5
Pilling 4-5

Description
The Wales fabric features a wool-like texture with rich layering.



Wales-101
Off-White



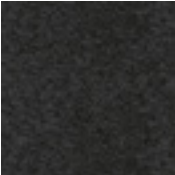
Wales-102
Beige Gray



Wales-170
Brown



Wales-411
Dark Brown



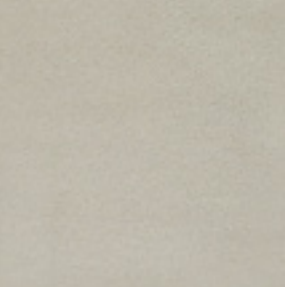
Wales-460
Carbon Black

Vienna (Special Finishes)

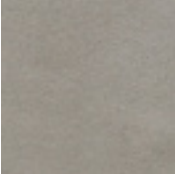
B

Composition 100% Polyester
Origin China
Abrasion >25000
Lightfastness 6
Rubbing 4
Pilling 4

Description
The fabric has a delicate, soft, and smooth suede-like surface. It offers resistance to cat scratches owing to its tight texture.
The fundamental fabric is a Level B three-proof fabric.
Three-proof: waterproof, oilproof, and dustproof.
The customized non-three-proof version is defined as Level A fabric.



LODP-Vienna-103
Off White



LODP-Vienna-151
Light Gray



LODP-Vienna-170
Brown

DL

B

Composition 75% Linen
25% Cotton

Description
The fabric from the DL0558 series is crafted using traditional looms. Unlike typical single-color cotton linen fabric, this fabric incorporates natural linen thread into the weaving, creating a distinctive and stylish texture.
To guarantee there will be no shrinkage issues, the fabric undergoes post-processing using exclusive patented natural fruit enzymes and is shaped during the post-finishing process.



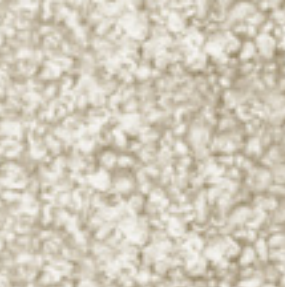
DL-0558-15
White

Glore

B

Composition 100% Polyester
Origin China
Abrasion >40000
Lightfastness 4
Rubbing 3-4
Pilling 4

Description
Inspired by the soft and warm wool, the fabric is three-dimensional and breathable, with a soft touch. It uses environmentally friendly dyes, resulting in soft and pure colors that can bring a natural and comfortable atmosphere to your home.



Glore-102
Cream White



Glore-170
Warm Gray



Glore-355
Dark Green



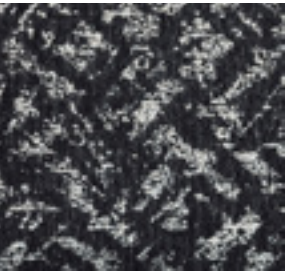
Glore-550
Red Brown

Damia

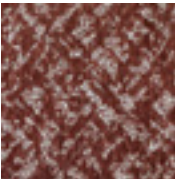
B

Composition 51%Polyester
49%Viscose

Description
Inspired by mottled nostalgia, its pattern is vintage and stylish, along with the striking irregular textures, giving the fabric a distinct personality and trendy attitude. The fabric is crisp,comfortable, and has a natural textured feel.



Damia JS2363-3
Carbon Black



Damia JS2363-4
Burnt Sienna



Damia JS2363-5
Platinum

ERD 0147

C

Composition 95% Polyester
5% Wool

Description
This fabric contains wool. Its striped pattern makes it stand out in any space. The texture is even more interesting, with herringbone, vertical, and diagonal patterns harmoniously combined, complemented by color coordination, giving it a strong vintage feel.



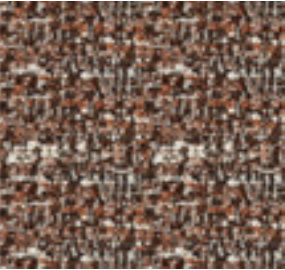
ERD 0147-01
Chocolate

A3540

C

Composition 90% Polyester
10% Acrylic

Description
This fabric has a three-dimensional structure, with tightly woven yarns at the base that give it a thick and durable foundation. The surface features soft, dot-like velvet, reminiscent of plum blossoms scattered on snow in winter, adding an element of interest.



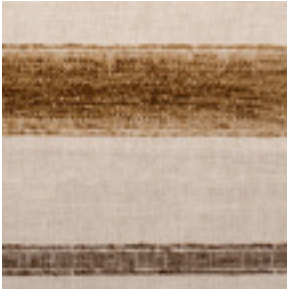
A3540-3A
Red Brown

Collins

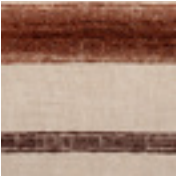
D

Composition 42% VI
22% PL
21% LI
15% PC
Origin Belgium
Abrasion >50000
Lightfastness 5
Rubbing 3-4
Pilling 5

Description
This fabric has a linen base that is naturally breathable, and the comfortable chenille texture adds a soft touch. The vibrant striped pattern suits various living spaces.



Collins193005
Yellow Brown



Collins193006
Brick Red



Collins193010
Dark Green

Umit

B

Composition100% Silicone

OriginChina

Abrasion>100000

Lightfastness5

Rubbing5

Pilling5

Description

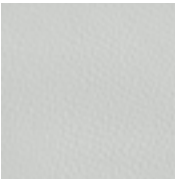
This organosilicon fabric has a leather-like texture and feel. It is not only scratch-resistant, wear-resistant, fold-resistant, but also waterproof, mildew-proof, and antibacterial. It minimizes raw material wastage during production, making it more environmentally friendly.

The fabric can be washed and air-dried naturally.



Umit-01

Deep Black



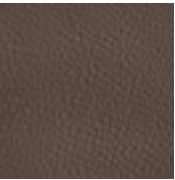
Umit-02

Ivory



Umit-03

Off White



Umit-04

Chocolate

LX

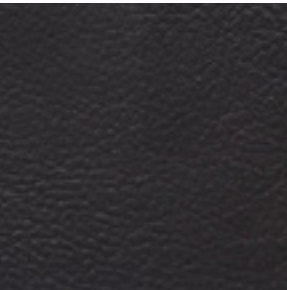
L0

CompositionReal Leather

OriginChina

Description

The LX series is made from real leather imported from Europe and the United States. This fine-grained leather has a subtle matte effect, giving it a more understated and exquisite look. The thickness ranges from 1.1mm to 1.2mm.



LX-387

Black

Weimar

L0

CompositionReal Leather

OriginChina

Description

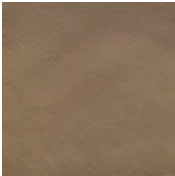
The Weimar series is made from real leather imported from Europe and the United States. The leather undergoes a light-rolling process, embodying a softer texture well-suited for home use. The surface of the Weimar series resembles natural human skin, offering excellent elasticity and support.

The thickness ranges from 1.1mm to 1.2mm.



Weimar-01

Black



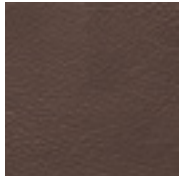
Weimar-02

Brown



Weimar-03

Off White



Weimar-04

Chocolate

LE932

L1

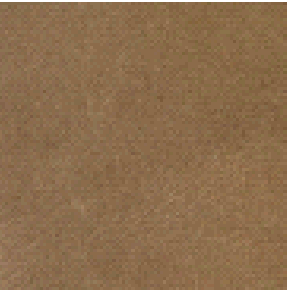
CompositionReal Leather

OriginChina

Description

The LE932 is made from real leather imported from Europe and the United States. As a two-color oil wax leather, it has a thinner oil-glass layer and matte surface. While maintaining a retro feel, it is also well-suited for modern home space.

It carries the marks of time and exudes a unique sense of nostalgia, as if it holds many stories within.



LE932-22

Caramel

Ninesky

L1

Composition Real Leather
Origin China

Description
The Ninesky series is crafted from real leather imported from Europe and the United States. This thickened leather undergoes a rolling process and is ideal for creating wide and thick products, as well as crafting inside-out seam to enhance their quality.
The thickness is approximately 2.0mm.



Ninesky-801
Black



Ninesky-802
Dark Brown



Ninesky-809
Chocolate



grado

ADDRESS

2nd Floor, Building 6, WPark
BinAn Road No.1181
Hangzhou, Zhejiang Province

CONTACT US

+86 400 080 8822
info@gradodesign.com

FOLLOW US ON

天猫 gradodesign 旗舰店

淘 grado 格度生活

微信 grado 格度

小红书 grado 格度

抖音 grado 格度·生活家

Instagram gradodesign_official

YouTube gradodesign_official

LinkedIn gradodesign_official



www.gradodesign.com