



Jorge Pensi has designed the collection LUND looking for a universe clear, honest and full of essential elegance. A collection which consists of elegant armchairs and sofas that are available with two types of arms and two versions of upholstered bodies. The first combines the upholstery with an enveloping wooden frame in natural oak and the second has a fully upholstered seat. The different arm types, the wooden shell and the upholstery are available in all colors and finishings of the INCLASS swatch cards. The wide range of finishings together with its balanced and timeless design allow its natural integration in lounge areas, waiting spaces, lobbies and contemporary houses.

## DESIGNER: Jorge Pensi



Jorge Pensi Design Studio was set up in 1984. Since then the studio has consolidated its position as a global point of reference for contemporary design. Its minimalist and expressive designs have received numerous prizes and awards. Some of its first products, such as the Toledo chair or the Regina lamp, have since become Spanish design icons renowned worldwide. In 1997, Jorge Pensi was awarded the National Design Prize by the Ministry of Industry and Energy and the BCD Foundation for outstanding professional achievement. If there is one thing which defines Jorge Pensi Design Studio's products, it is their timelessness. They constantly seek a balance between poetry and realism, material and space, abstraction and emotion. The aim is to create as many sensations as possible with as few resources as possible, challenging the usual logic in order to establish whether or not it is possible to create something new.

## SEAT BODY

### Fully upholstered.

It is manufactured with a steel structure covered in mould-injected CMHR high-density, high-resilience polyurethane foam.

### Upholstered and exposed wood.

It is manufactured with a steel inner structure covered in HR high-resilience, variable-density flexible polyurethane foam.

**Upholstery:** Available in all the fabrics and leathers from the INCLASS swatch card and also in fabrics supplied or specified by the customer.



## STRUCTURE

Made from 30x15-mm steel tube.

**Finishes:** Coated in heat-hardened polyester powder paint in any of the colours from the INCLASS metallic finishes chart.

**Pads:** Includes standard plastic pads in contact with the floor.



## ARMS




### Metallic arms.

Laterals manufactured in 30x15-mm steel tube and top part manufactured from a 30x10-mm solid plate.




### Metallic arms with upholstered armrests.

Manufactured from 30x15-mm steel tube and top part manufactured from a 30x10-mm solid plate, with upholstered embellisher in the top part.

| <b>Fully upholstered</b>  | Height | Seat height | Arm height | Width | Seat width | Depth | Seat depth | Weight (kg) | Fabric (m) |
|---|--------|-------------|------------|-------|------------|-------|------------|-------------|------------|
|  | 68     | 43          | 53,5       | 69    | 62         | 71    | 52         | 19          | 2,4        |
| LUNO010   |        |             |            |       |            |       |            |             |            |

|   |    |    |      |     |     |    |    |    |     |
|---|----|----|------|-----|-----|----|----|----|-----|
|  | 68 | 43 | 53,5 | 130 | 124 | 71 | 52 | 28 | 3,7 |
| LUNO020   |    |    |      |     |     |    |    |    |     |

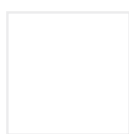
| <b>Upholstered and exposed wood</b>  | Height | Seat height | Arm height | Width | Seat width | Depth | Seat depth | Weight (kg) | Fabric (m) |
|--|--------|-------------|------------|-------|------------|-------|------------|-------------|------------|
|  | 68     | 43          | 53,5       | 69    | 62         | 71    | 52         | 25          | 1,8        |
| LUNDO110   |        |             |            |       |            |       |            |             |            |

|   |    |    |      |     |     |    |    |    |     |
|---|----|----|------|-----|-----|----|----|----|-----|
|  | 68 | 43 | 53,5 | 130 | 124 | 71 | 52 | 40 | 2,7 |
| LUNDO120  |    |    |      |     |     |    |    |    |     |

## METALLIC BASES



Black



White



Dark green  
RAL 6003



Mustard  
RAL 1032



Vison  
RAL 1019



Brown  
RAL 7006



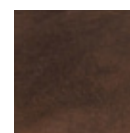
Grey  
RAL 7036



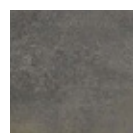
Anthracite  
RAL 7043



Rouge  
RAL 3011



Rust brown



Rust grey

## WOODEN PARTS



Naturel oak

## CERTIFICATION & STANDARDS

- ANSI-BIFMAX5.4

- The quality management system of INCLASS is certified in accordance with ISO 9001:2008 in all the design, manufacturing and sales procedures of its products.

- INCLASS production processes are certified according to environmental ISO 14,001:2004 quality standards and are carried out through the reduction of waste and energy consumption in order to minimise any impact on the environment.



---

## WARRANTY

INCLASS MOBLES S.L. guarantees the products of the collection LUND against any manufacturing and materials defect up to a period of 5 years from the date of the invoice. All damages caused by misuse, accident as well as those having their cause on the lack of proper maintenance are excluded from this warranty. Natural attrition of fabric and upholstery foam is also excluded from this warranty. The customer must prove the date of purchase of the article with the invoice.

INCLASS replace or repair nonconforming products or components taking over the costs without any other liability.